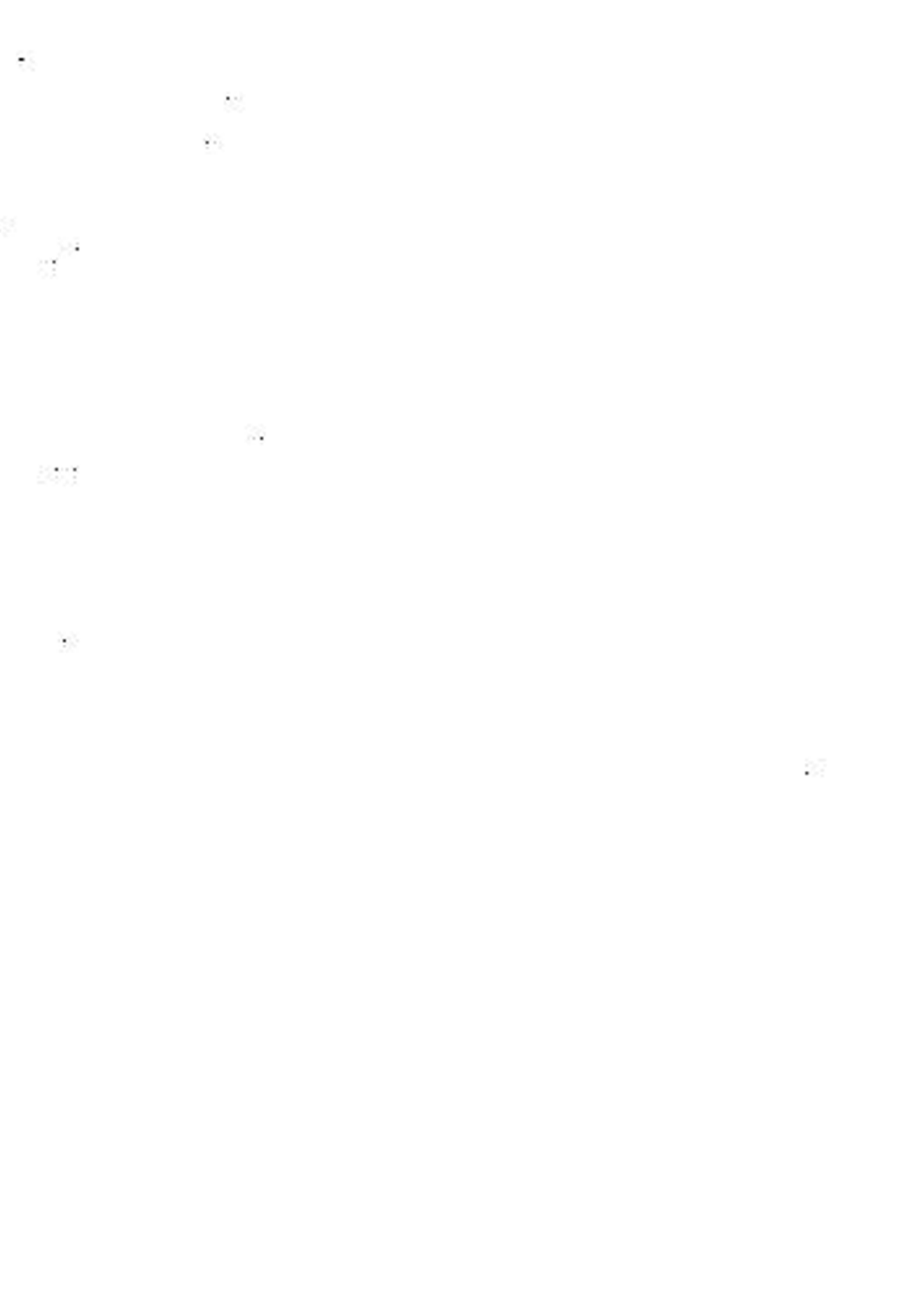


P

**RELUDE**



•







Handwritten text in a vertical column on the right edge of the page, likely bleed-through from the reverse side. The text is written in a cursive script and is mostly illegible due to the angle and fading.



I have a ch  
to be, and  
about it b

choice here between  
is generally tho  
because both sides

n writing about ■

ught to be. The

s are fertile groun

■ as ■ is, or a

re isn't any great

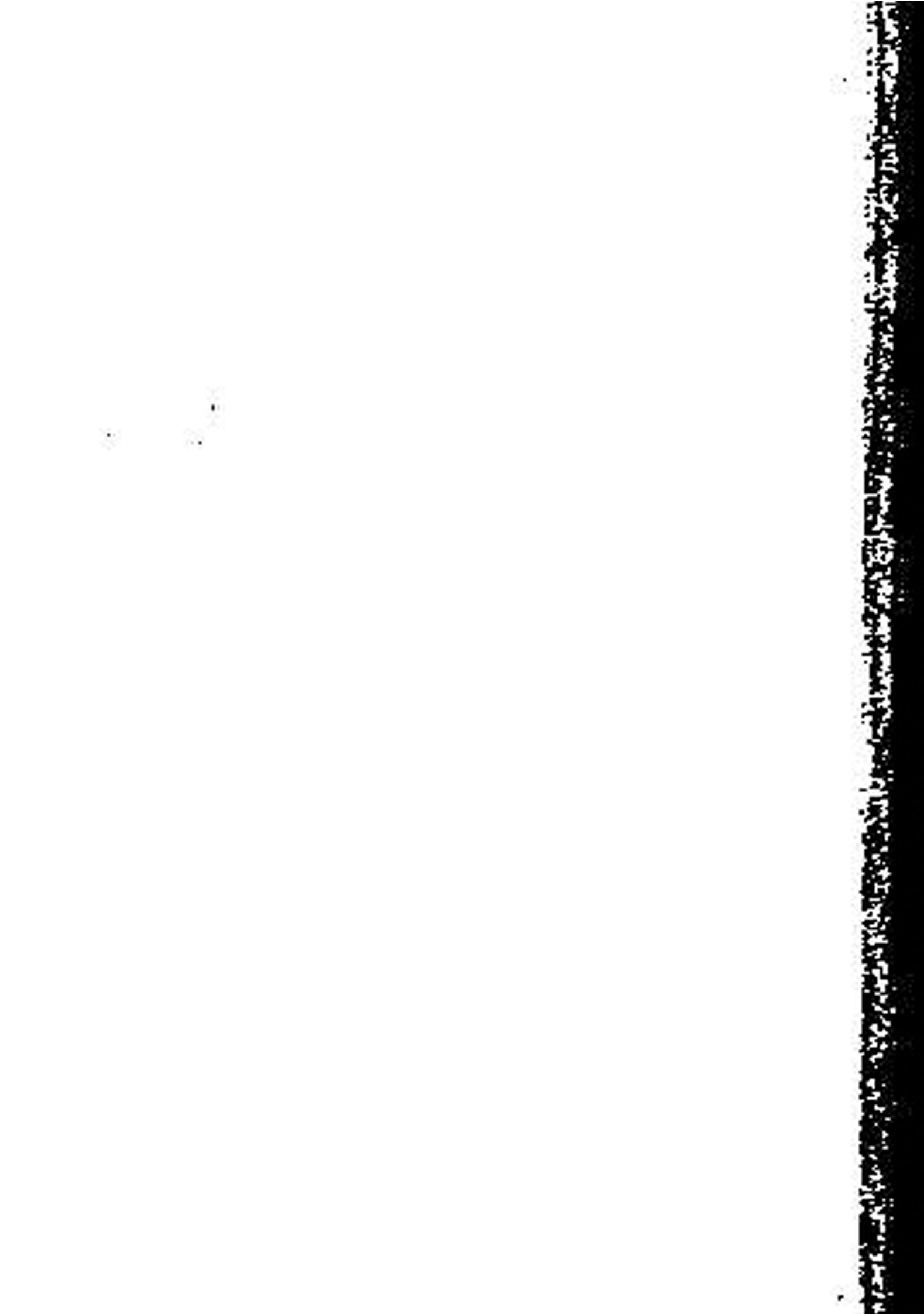
nd: the stories m

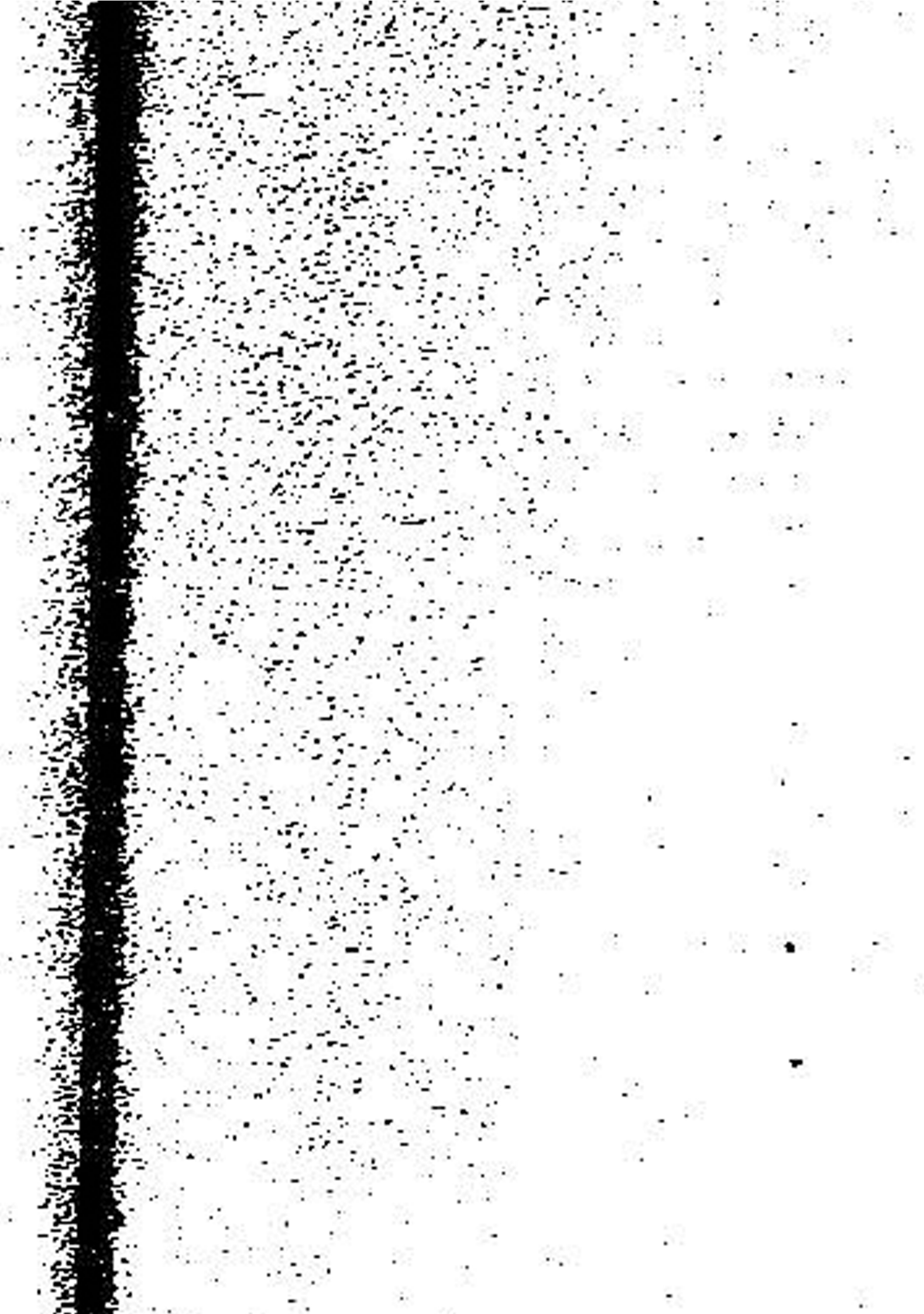


as ■ seems

at difficulty

erely differ





in *plausibil*

Criti

course down street

ity.

c [REDACTED], 19

... and ... ..

949<sup>1</sup>

111, 112, 113, 114, 115, 116

11

Handwritten text at the top of the page, possibly a title or header.

Small handwritten mark or character.

Small handwritten mark or character.

Small handwritten mark or character.



